

Smart City Stupidity - Disaster Capitalism: How NGO's and Human Trafficking Organizations Profit

International and Local Observations by, Robert L. Peters

The exploitation of natural or man-made disasters (such as catastrophic weather events, war, epidemics, etc.) in service of capitalist interests; the practice of using unstable social, political, and economic situations to impose or benefit from deregulation, the privatization of public assets, etc. 2005.



From their website: World Economic Forum (WEF)

<https://www.weforum.org/>

A screenshot of the World Economic Forum website. The top navigation bar includes 'Discover', 'Monitor', and 'Create'. The main content area features a 'Transformation Map' for Chile, which is a circular network diagram with 'Chile' at the center. The map is divided into several sectors: 'Chile's Mineral Wealth', 'Chile's Copper', 'Chile's Seafood', 'Chile's Wood Pulp', 'Chile's Fruit and Nuts', and 'Chile's Inorganic Chemicals'. Each sector is connected to various trade partners and export categories. To the right of the map is a 'Chile' article preview with a cityscape image, a 'Read more' link, and 'Share' and 'Embed' buttons. Below the article is a 'Browse' section with 'Browse' and 'Latest' buttons.

Discover Monitor Create WORLD ECONOMIC FORUM Join us Sign in

← Discover History

Behavioural Sciences

Curation: University of Siegen

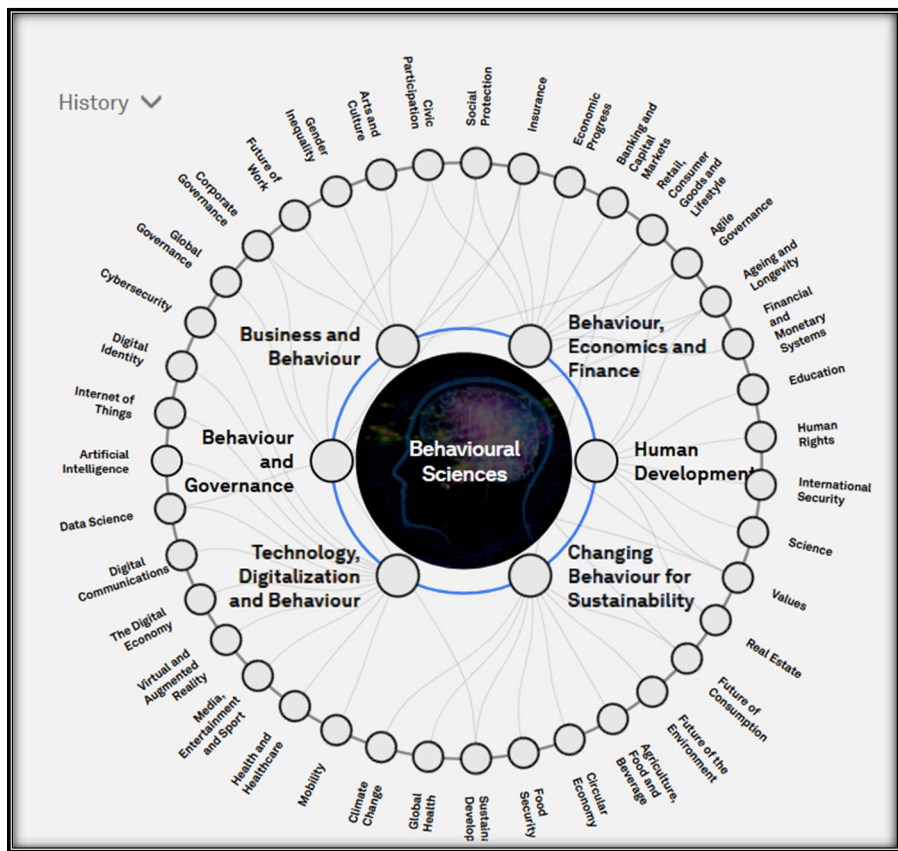
The behavioural sciences are a powerful tool that can be wielded to engender responsible decision-making and improve the quality of life. Whether by helping people improve their eating habits or boost their retirement savings, helping a company engender better team spirit, or helping governments encourage the payment of taxes,

Read more

Share Embed

Browse

Browse Latest



Behavioural Sciences

Curation: University of Siegen

The behavioural sciences are a powerful tool that can be wielded to engender responsible decision-making and improve the quality of life. Whether by helping people improve their eating habits or boost their retirement savings, helping a company engender better team spirit, or helping governments encourage the payment of taxes,

Read more

Discover Monitor Create

WORLD ECONOMIC FORUM

Join us Sign in

Discover History

Metaverse for Mental Health

Curator: Frontiers Media

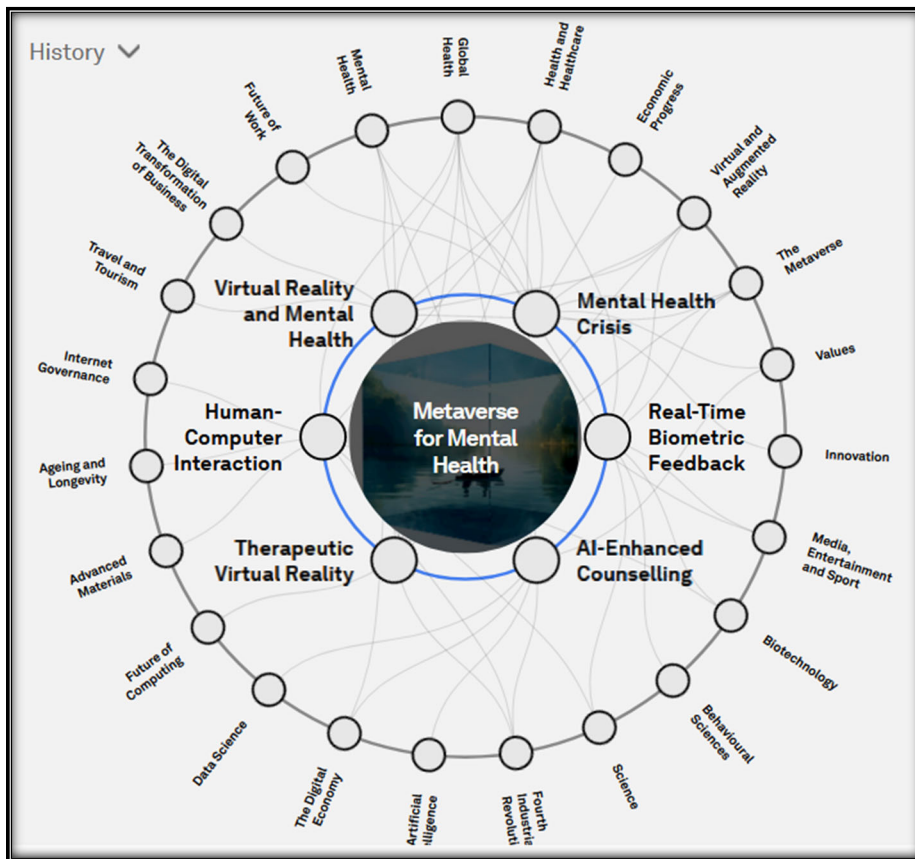
There was a 13% increase in mental health conditions and substance use disorders globally between 2007 and 2017, according to the World Health Organization, and that was before COVID-19 triggered a 25% increase in the prevalence of anxiety and depression worldwide. Excessive screen time and social media use can decrease

Read more

Share Embed

Browse

Browse Latest



Metaverse for Mental Health

Curator: Frontiers Media

There was a 13% increase in mental health conditions and substance use disorders globally between 2007 and 2017, according to the World Health Organization, and that was before COVID-19 triggered a 25% increase in the prevalence of anxiety and depression worldwide. Excessive screen time and social media use can decrease

Read more

Discover Monitor Create WORLD ECONOMIC FORUM

← Discover History

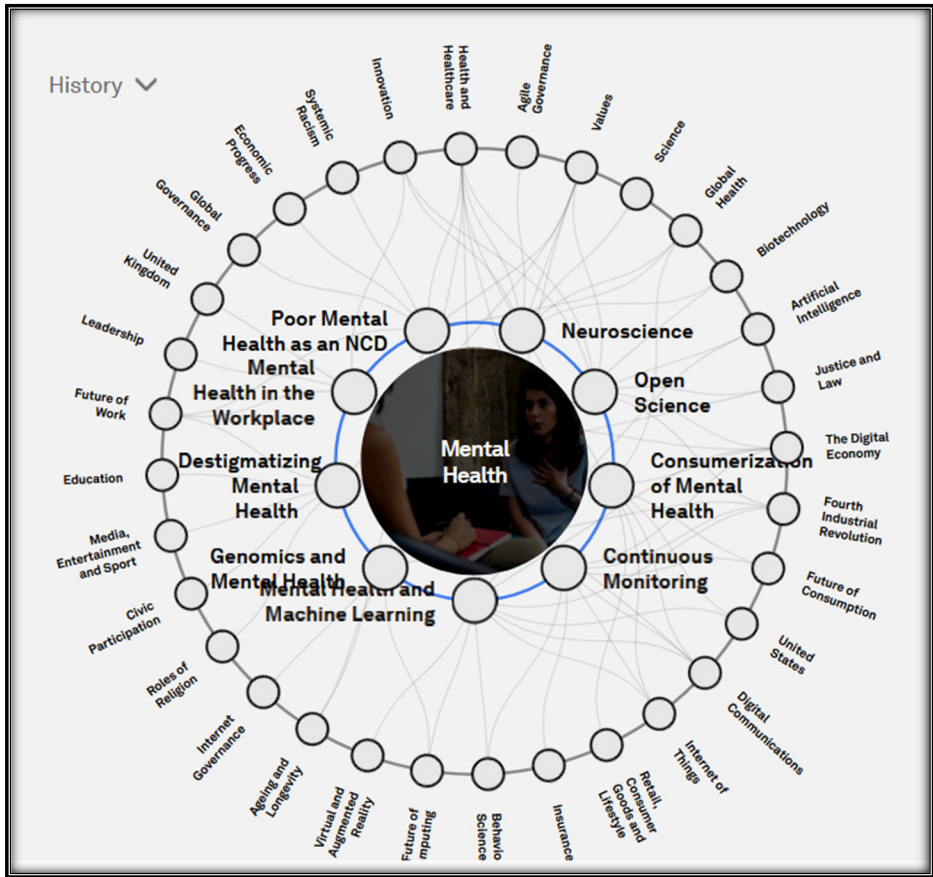
Mental Health

The cost of mental health conditions (and related consequences) is projected to rise to \$6 trillion globally by 2030, from \$2.5 trillion in 2010, according to a study published by the World Economic Forum and the Harvard School of Public Health. That would make the cost of poor mental health greater than that of cancer, diabetes, and respiratory ailments

Read more

Share Embed

Browse Latest



Mental Health

The cost of mental health conditions (and related consequences) is projected to rise to \$6 trillion globally by 2030, from \$2.5 trillion in 2010, according to a study published by the World Economic Forum and the Harvard School of Public Health. That would make the cost of poor mental health greater than that of cancer, diabetes, and respiratory ailments

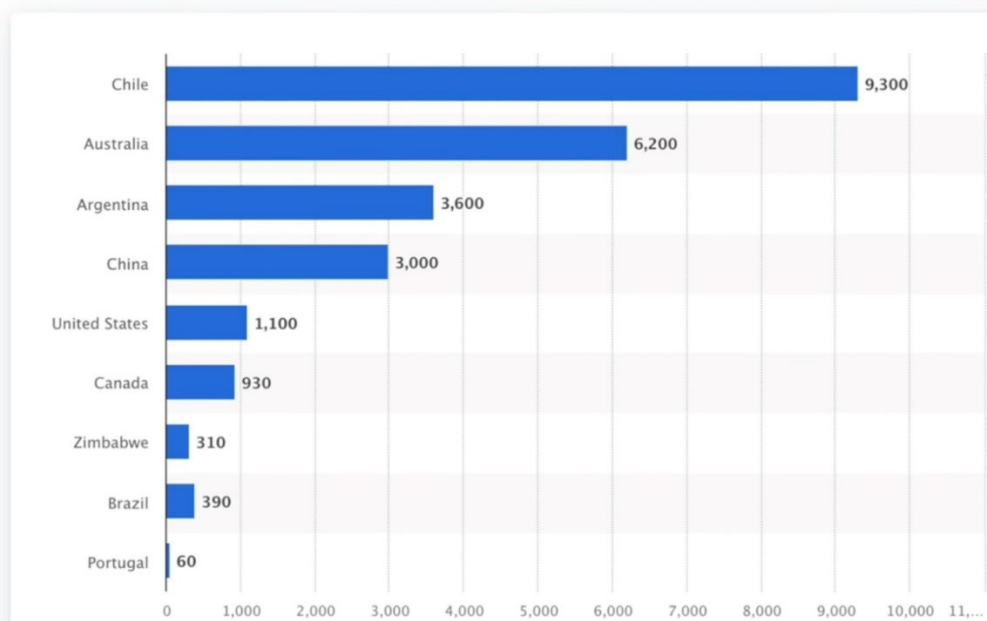
The World Economic Forum Talks About "Mind Control Using Sound Waves"

The World Economic Forum – one of the most powerful elite organizations in the world – recently discussed the emergence of remote mind control technology. And it admits that it could be used to turn humans into mind-controlled slaves.

The death toll from Chile's wildfires reaches 131, and more than 300 people are missing. Feb 6, 2024



Reserves of lithium worldwide as of 2023, by country (in 1,000 metric tons)



MARKETS BUSINESS INVESTING TECH POLITICS CNBC TV INVESTING CLUB PRO

CLEAN ENERGY

Chile plans to nationalize its vast lithium industry

PUBLISHED FRI, APR 21 2023-12:43 PM EDT | UPDATED FRI, APR 21 2023-3:37 PM EDT

REUTERS

SHARE    

Who owns lithium mines in Chile?

Currently, only two companies mine lithium in Chile: **Chilean firm SQM**, which is nearly a quarter-owned by a Chinese company, and U.S. firm Albemarle. They are both private and operate in the largest of the country's more than 40 salt flats that are home to lithium reserves. Jun 23, 2023



MARKETS BUSINESS INVESTING TECH POLITICS CNBC TV INVESTING CLUB PRO

TECH

The rise of Albemarle, the world's largest lithium producer

PUBLISHED SAT, JUN 3 2023-8:00 AM EDT | UPDATED MON, JUN 5 2023-7:28 AM EDT



Shawn Baldwin

SHARE

Who owns Maui? After the State of Hawaii, who owns over 154,000 acres on Maui, **Alexander & Baldwin is the second-largest landowner at over 65,000 acres**, and the U.S. Government is the third-largest landowner at over 33,000 acres.

yahoo!
finance

ALEX

Top Institutional Holders

Holder

Blackrock Inc.

Vanguard Group Inc

State Street Corporation

....ALL Boston-based companies?



LITHIUM MINERS

ALBEMARLE (ALB)	263.59	+2.95	[+1.13%]
LITHIUM AMERICAS (LAC)	21.87	+0.20	[+0.92%]
PIEDMONT LITHIUM INC (PLL)	66.99	+1.52	[+2.31%]

POWER LUNCH EXCLUSIVE | **ALBEMARLE CEO ON SURGING LITHIUM DEMAND**

CNBC

ALBEMARLE SALES ESTIMATES
LITHIUM SALES TO BATTERY-RELATED INDUSTRIES

 **25%**

PER YEAR BETWEEN 2022-2027

POWER LUNCH EXCLUSIVE

CNBC

AP WORLD U.S. ELECTION 2024 POLITICS SPORTS ENTERTAINMENT BUSINESS SCIENCE FACT CHECK ODDITIES NEWS

Israel-Hamas war Beatles biopics Election 2024 Capital One will buy Discover Julian Assange

Chile's plan for state control in lithium dismays business

npr KVC R 91.9 HD

NEWSLETTERS SIGN IN NPR SHOP DONATE

NEWS CULTURE MUSIC PODCASTS & SHOWS SEARCH

WORLD

In Chile's desert lie vast reserves of lithium — key for electric car batteries

SEPTEMBER 24, 2022 · 6:00 AM ET

By John Otis

"It's really, really a beautiful place," says Marcelo Valdebenito, a public relations officer for Albemarle Corp., the Charlotte, N.C.-based chemical company that operates the mine. "This is the lithium that powers the world."

Lithium Exporter Chile Wants Strategic Accords With the West

 Yvonne Yue Li
Bloomberg News

WEF summit, days before fires...



4th LA Sdewes Conference VIÑA DEL MAR 2024

JANUARY 14-17, 2024 VIÑA DEL MAR, CHILE



Smart City Business Chile

Business Services · Chile · <25 Employees

[View Company Info for Free](#)

About

Headquarters 230 Calle Seis Oriente, Vina del Mar, Valparais...

Phone Number +56 954418249

Recent New



REUTERS®

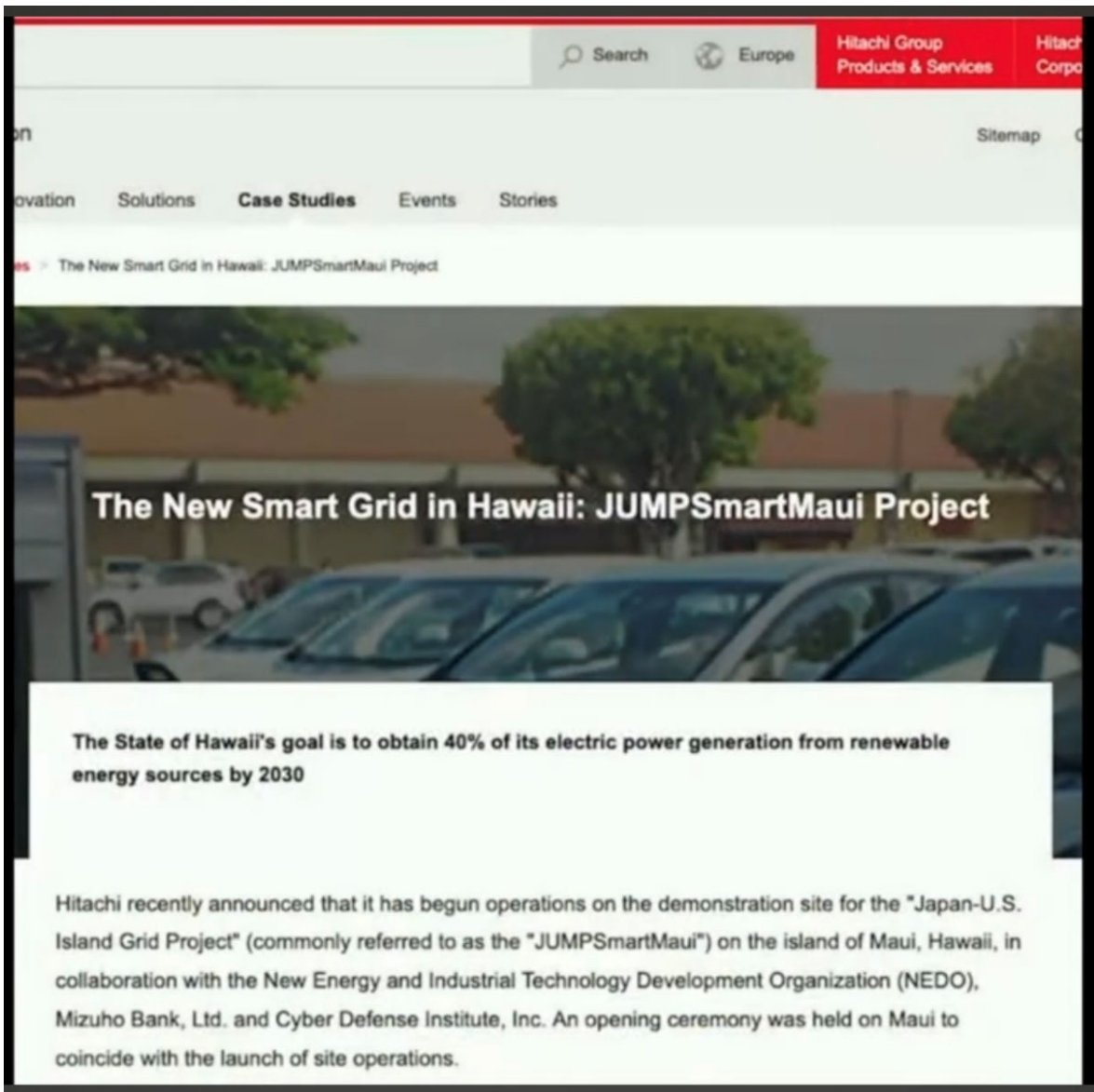
[World](#) [Business](#) [Markets](#) [Sustainability](#) [Legal](#) [Breakingviews](#) [More](#)

Chile's former president Sebastian Pinera dies in helicopter crash

By Natalia A. Ramos Miranda, Anthony Esposito and Fabian Cambero

February 6, 2024 7:44 PM PST · Updated 13 days ago





Maui has similar DPW issues as SomMerville does...funds spent in wasteful ways to collect more of our personal data.

If you are not aware of the fires that hit Maui, Chile, many in China, Russia, etc. Many are not natural, as they are burning at almost ten times the temperatures as any normal brush, wood or petroleum fires. You can see the melted aluminum and steel parts of cars below.

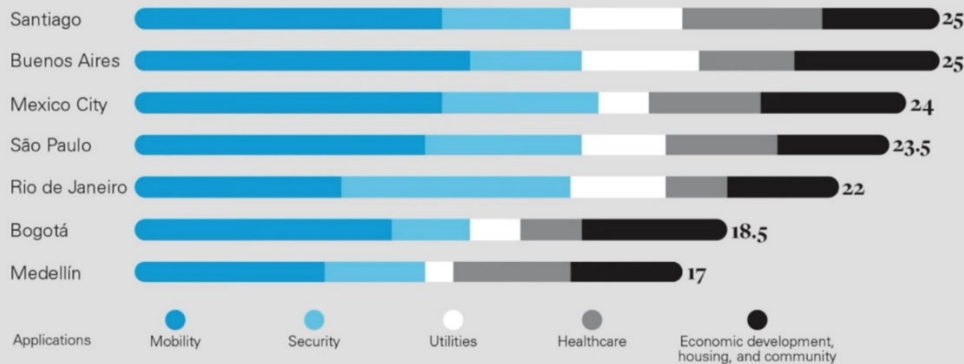


Q. At what temperatures do forest fires burn? An average surface fire on the forest floor might have flames reaching 1 meter in height and can reach temperatures of **800°C (1,472° F)** or more. Under extreme conditions a fire can give off 10,000 kilowatts or more per meter of fire front.

In the glass-melting furnace, the raw materials are heated to temperatures ranging from **1500 to 1700°C (2700–3100°F)** and are transformed through a sequence of chemical reactions to molten glass.

The cities in Latin America deploying the greatest numbers of smart cities applications

Deployment of smart city applications
Maximum of 55 points

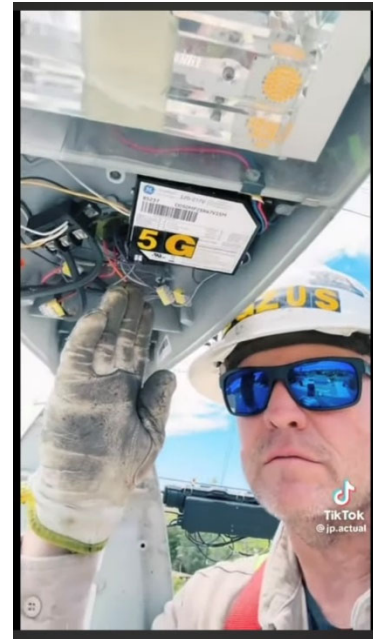


Source: McKinsey Global Institute analysis

The city's sensor system began in 2018, when more than **45,000 public lights were switched to LED**. Along with the LEDs, the city installed sensors that enabled it to remotely control the lighting in order to save energy. The lighting system was connected to Cerro Dominador – the largest solar plant in Latin America – which powered the system. That reduced the city's carbon footprint and helped reduce energy costs on lighting by 25%.

Smart City Grid technology 'Made in China' with 'bells and whistles' of controls or manipulation WE THE PEOPLE did not intend nor order.

Introduction to their induction



Born to a Dutch family of Jewish heritage, his father Benjamin Frederik David Philips was a first cousin to Karl Marx (Gerard's paternal grandmother Sophie Pressburg was a sister of Henriette Pressburg, the mother of Karl Marx). His mother was Maria Heyligers. His grandfather was tobacco merchant Lion Philips.




Wikipedia
https://en.wikipedia.org/wiki/Gerard_Philips

[Gerard Philips - Wikipedia](#)



Signify

For over 120 years, Signify (formerly Philips Lighting) has been at the forefront of innovation. Signify uses the transformative power of light to make people more comfortable and productive – providing high-quality light in public places, professional spaces, and at home. Signify uses light to make people feel happier and safer – light that entertains, inspires and informs, makes cities more liveable, and satisfies people's daily needs.



Headquarters
Netherlands



Improve lighting performance

Manage, monitor, and control all of your street lighting, façade lighting, and public indoor lighting remotely via map-based dashboards. Data-rich automated fault notifications make outage scouting a thing of the past, reducing repair times from days to hours. Real-time and historical sensor data offer actionable insight on activities and trends in the illuminated environment.

 2024 BRIGHTSTAR AWARDS
INDUSTRY GUIDE
ADVERTISE
SUBSCRIBE
MAGAZINE ARCHIVE
NEWSLETTER ARCHIVE
ARCHITECTURE + DESIGN MASTER
LIGHTSPEC
LOGIN JOIN


LEDs & SSL DESIGN
ARCHITECTURAL LIGHTING
CONNECTED SSL & CONTROLS
LIGHTING FOR HEALTH & WELLBEING
HORTICULTURAL LIGHTING

CONNECTED SSL & CONTROLS

Data is the new lighting as Philips unfurls IoT platform

All data, all the time: The company's new Interact system continuously collects and analyzes information gathered from lighting and other sources.

Mark Halper
March 19, 2018

All data, all the time: The company's new Interact system continuously collects and analyzes information gathered from lighting and other sources.

In the biggest declaration yet that the Internet of Things represents the industry's future, the world's largest lighting company, Philips Lighting, unveiled an IoT platform that turns lighting into a byword for collecting and analyzing data about everything, everywhere.

← [PRESS ROOM](#)

February 25, 2020

Maui County Illegally Circumvented Environmental Review for LED Streetlights Project

Victory — Citizen groups vindicated in lawsuit to protect Maui seabirds and sea turtles

For years, wildlife experts and community members warned the county that streetlights that emit a high amount of blue light can harm imperiled seabirds and sea turtles and urged the county to use LED fixtures that filter out blue light, like the streetlights used on Hawai'i Island. Seabirds like the endangered Hawaiian petrel and the threatened Newell's shearwater will circle bright, blue-white lights until they fall to the ground from exhaustion or crash into nearby buildings. This type of lighting also disorients the critically endangered hawksbill turtle and threatened green sea turtle, distracting hatchlings from reaching the ocean and diverting adult turtles from nesting sites. You can only imagine what these LEDs are doing to humans.

How many M's in Somerville?

...also designated a SmartCity. Is this what we should expect in the near future? Disaster Capitalism, so they can rebuild OUR land for another occupant. The owners of Disaster Capitalism paid for the extra M's in SomMerville.

